



elo



TABLE OF CONTENT



GENERAL INFORMATION

1. PREFACE

Thank you for choosing the ELO BIKE electric scooter. The electric scooter is a new type of fashionable outdoor transportation tool. It has the advantages of low-carbon emission, protecting the environment, improving travel efficiency, and also a relaxing & exercising activity.

The ELO BIKE electric scooter owns the advantages of simple structure, light weight and simplicity & stylish shape. The scooter body adopts an integrated magnesium alloy design, which is light, rigid and has excellent shock absorption performance. The scooter front tube is equipped with a LED dashboard, which is beautiful, intelligent and full of sense of science and technology.

Please read this user manual carefully before using.

Please also note that this user manual is produced based on the latest version of vehicle available at the time of writing. Because of ongoing product development your vehicle may not include all, or may have further features than the ones described in this manual.

We wish you plenty of fun driving with your new ELO BIKE

ELO international

2. GENERAL INFORMATION & SECURITY STATEMENT

1. The ELO BIKE electric scooter is primarily a sport and entertainment tool, not a transportation vehicle. However once you drive it into a public area, it will also have the property of a transportation vehicle, and you need to learn to master riding skills. The re-seller, importer or manufacturer shall not be held liable for any casualties or losses caused by drivers' inexperience, fault or failure to follow the instructions in this user manual.
2. Please respect the pedestrian's rights of way when driving. To avoid frightening pedestrians, you need remind pedestrians and slow down when passing behind them, stay alert during driving, drive at low and medium speeds on unconventional complex roads such as potholes and smooth surfaces, and maintain a reasonable and safe distance from others and vehicles.
3. When driving in countries and regions where there are no relevant national standards and regulations for electric scooters, you must strictly abide by the safety requirements of this manual for riders. We will not bear any direct and/or joint liabilities for any financial or personal losses, accidents, legal disputes, and all other unfavorable events that cause conflicts of interest caused by the use behaviors that violate the instructions of either local regulations or in this manual.
4. Please do not lend the electric scooter to people who can't operate it. If you lend the electric scooter to a friend, you need to teach and instruct him or her to operate the vehicle properly. He or she must wear safety protective gear when using it.
5. Please perform a basic inspection of the electric scooter before each driving. If you find any abnormalities such as obvious loose parts, significantly reduced battery life, slow tire leaks or excessive wear, abnormal steering noise or malfunction, please stop using the vehicle immediately and cut it off. Do not drive forcibly. And please contact the after-sales service phone to obtain professional guidance or repair and maintenance services.
6. Do not use alcohol, gasoline, kerosene or other corrosive che-

mical solvents to clean the electric scooter, and it is forbidden to use a pressure gun to spray and wash, otherwise it may get an electric shock or cause serious failure due to internal water.

7. Do not use other types or brands of battery packs, do not touch the battery contacts, and do not disassemble or puncture the shell. Avoid metal objects contacting the battery contacts and causing short circuits. Otherwise, it may result in battery damage or personal injury. Only use the original charger to charge, otherwise there is a danger of damage or fire
8. Do not place the electric scooter or its battery pack in a car exposed to the sun in summer, and it is forbidden to put the battery pack into a fire, otherwise it may cause the battery to fail, overheat, and even cause a risk of fire. When don't use scooter for more than 30 days, please fully charge it first, store in a cool and dry place, and fully charge it every 60 days, otherwise the battery may be damaged and this damage is not covered by the warranty.
9. Only use the parts and accessories approved by us. Please do not modify your electric scooter without authorization. Damage to the electric scooter caused by unauthorized modification is not covered by the warranty. We will not bear any responsibility for property losses, personal injuries, accidents, etc. caused by unauthorized modification.



TECHNICAL SPECS

VEHICLE

Vehicle dimensions (LxWxH)	1330x580x1030 mm
Wheelbase	930 mm
Net weight	33 kg
Seat height from ground	770 mm
Seat height from footrest	540 mm
Ground clearance	150 mm

PERFORMANCE

Rated motor power	250W
Max. torque	≥40N.m
Max. speed	25km/h
Breaking distance, dry conditions	≥10 m
Max climbing angle	20°
Max. load capacity	120 kg
Typical range, normal conditions	30-35 km
Gears: ECO / M / S	15 / 20 / 25 km/h

ELECTRICS

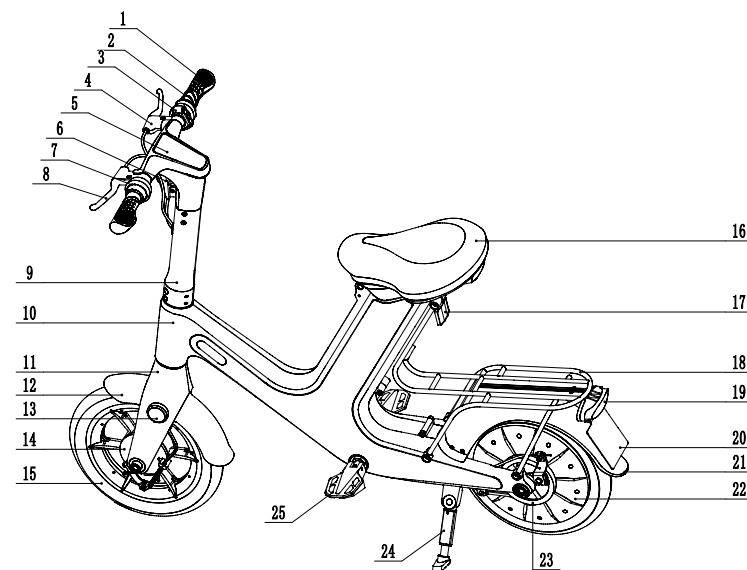
Battery capacity	48V, 10.4Ah
Charger input	AC 100-240V - 50/60HZ
Charger output	DC 54V, 2A
Charging time, empty-full	5-6 h
Front light	LED
Rear light / Brake light	LED

BRAKES & WHEELS

Front brake	Mechanic disc brake
Rear brake	Mechanic drum brake
Additional brake, motor	Electromagnetic brake
Rim diameter	14"
Tyre dimensions, front & rear	14x2.125 / 57-25
Tyre pressure front & rear	35-45 psi (2.4-3.1 bar)



GENERAL OVERVIEW



- | | |
|------------------------|-----------------------------|
| 1. Grip | 14. Front brake |
| 2. Throttle | 15. Front wheel |
| 3. Function switch | 16. Seat |
| 4. Right brake lever | 17. Rear reflector |
| 5. Dashboard / Display | 18. Rear rack |
| 6. Front LED light | 19. Rear light |
| 7. Bell | 20. Plate holder (optional) |
| 8. Left brake lever | 21. Rear mud guard |
| 9. Steering stem | 22. Motor |
| 10. Frame | 23. Rear brake |
| 11. Front fork | 24. Side stand |
| 12. Front mud guard | 25. Foot peg |
| 13. Side Reflector | |

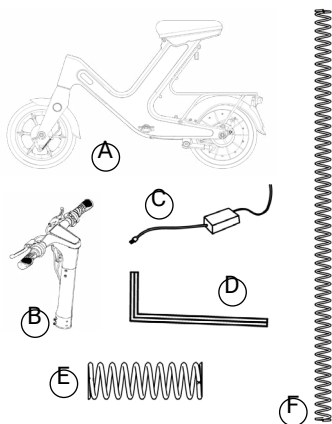


ASSEMBLY

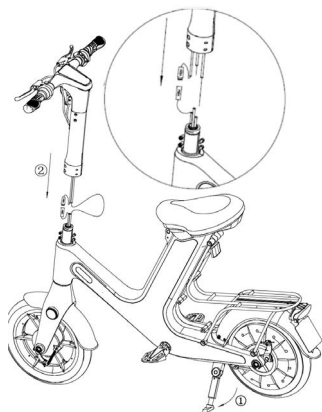
1. UNPACKING

- 1.1 Take the scooter and all accessories out of the packing box.
- 1.2 Make sure the box contains all components listed below.

- A. ELO BIKE
- B. Steering column + handlebar
- C. Charger
- D. 5mm Allen wrench
- E. Front brake cable spring
- F. Rear break cable spring

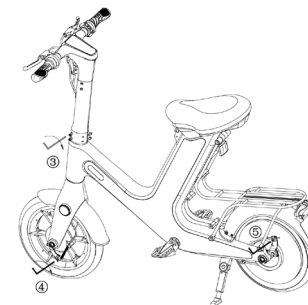


2. STEERING COLUMN & BRAKES



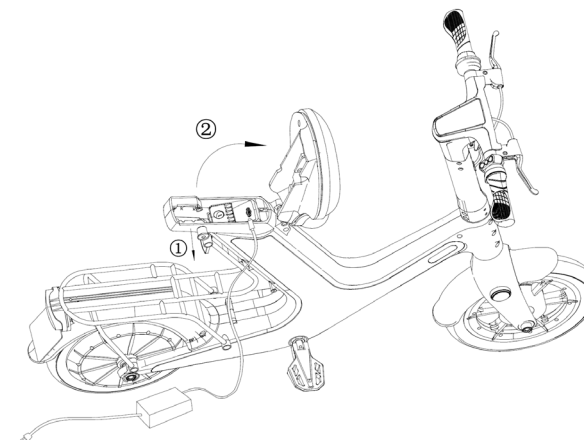
- 2.1 Place the scooter on the side stand (1)
- 2.2 Connect the male and female cable connectors (2)
- 2.2 Thread the brake wires into the wire cables on bikes steering stem. The longer wire into the lower wirepipe, and the shorter wire into the higher wirepipe.

- 2.3 Fasten the steering column by tightening the screws at the base with an allen wrench (3)
- 2.4 Connect and adjust the brake wires to the brakes. Remember to put on the wire springs. The short spring on the front brake wire (4), and the long spring on the rear brake wire (5). When adjusting, the brake levers should have 5-10mm of freeplay before you can feel brake effect.



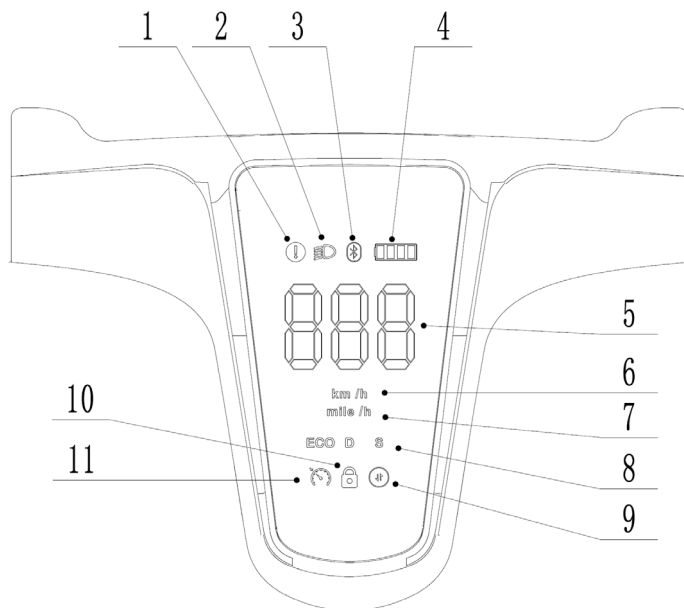
3. BATTERY

- 3.1 The battery need to be charged fully before the first time the bike is used.
- 3.2 Open the saddle by pulling out the locking pin (1) on the right hand side below the saddle and lifting the back of the saddle (2) iu.
- 3.3 Locate charger contact on top of the battery and connect the charger. First to the battery, then a 230V socket. Charge until the charger indicator light turns green.



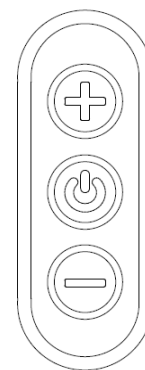
OPERATION

1. DISPLAY OVERVIEW



- | | |
|------------------------------|------------------------------|
| 1. Error display | 7. Speed unit display - mph |
| 2. Headlight indicator | 8. Gear / Drive mode display |
| 3. Not in use | 9. Throttle lock display |
| 4. Battery power display | 10. Lock display |
| 5. Speed / Milage display | 11. Cruise display |
| 6. Speed unit display - km/h | |

2. BUTTON FUNCTIONS



2.1 Turning the power on

2.1.1 Short press the middle power key to start the scooter and long press the middle key again for 2 seconds to shut down the machine

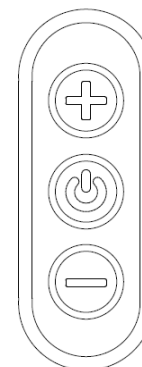
2.1.2 After power on, you need to enter a PIN-code to unlock. The starting PIN-code is 000. The plus(+) and minus(-) keys are input control of numbers 0-9. The middle power key is three groups of digital input switching. After all three digits are 0, double-click the middle power key to unlock the vehicle

2.2 Driving state

2.2.1 After unlocking, you can enter the driving state. If you want to ride forward, you need to press the middle power key to unlock the handle throttle. The throttle lock display (9) will light up when the scooter can be driven.

2.2.2 If the wheel stops for 10 seconds, the throttle will be locked automatically, you need to press the power button again to unlock it.

2.2.3 When the scooter is in state of unlock, the plus(+) or minus(-) key switches the speed gear: ECO-D-S;



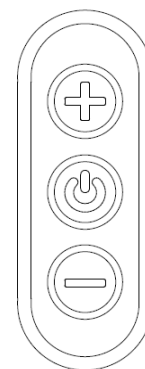
2.3 Headlight

2.3.1 Press and hold the plus key(+) for 1 second to turn on and off the headlight

2.4 Cruise mode

2.4.1 Press and hold the throttle for 8 seconds to enter the cruise mode.

2.4.2 Cruise mode is removed by performing any operation (brake, press throttle etc)



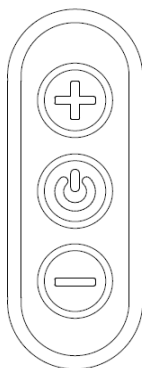
2.5 Lock the scooter

2.5.1 Press and hold the start key and the minus(-) key to lock the scooter at the same time

2.6 Set the PIN-code

2.6.1 Press and hold the power on key and the minus(-) key for 5 seconds to set the PIN-code.

2.6.2 After all three digits are set, double-click the middle power key to accept the new PIN-code

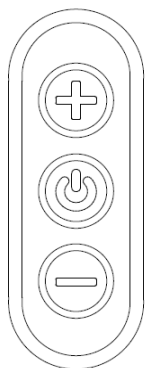


2.7 Reset PIN-code

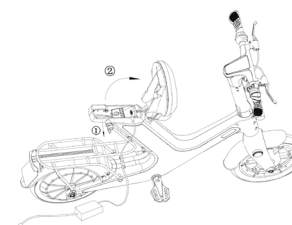
2.7.1 When in unlocked state; Press and hold the power on key, plus(+) key and minus(-) key for 5 seconds at the same time to reset the password to 000.

2.8 Turn off PIN-code

2.8.1 Press and hold the power on key and the plus(+) key for 5 seconds at the same time to switch function whether it need input password to power on the scooter or not.

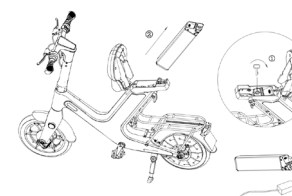


1. CHARGING THE BATTERY IN THE SCOOTER



- 1.1** Open the saddle by pulling out the locking pin (1) on the right hand side below the saddle and lifting the back of the saddle (2) .
- 1.2** Locate charger contact on top of the battery and connect the charger. First to the battery, then a 230V socket. Charge until the charger indicator light turns green.

2. CHARGING THE BATTERY SEPARATELY



- 2.1** Open the saddle by pulling out the locking pin (1) on the right hand side below the saddle and lifting the back of the saddle (2) .
- 2.2** Open the battery lock with the key, pull out the battery, you can lift the battery away for charging. Charge until the charger indicator light turns green.

3. GENERAL CHARGING INSTRUCTIONS

- 3.1 When the battery power is used out, charge it in time to avoid damage to the battery.
- 3.2 When charging is complete, you need to unplug the charging port in time, do not charge the battery for a long time
- 3.3 Limit 0 ° C ~ 45 ° C, - 20 ° C ~ 60 ° C discharge, keep the battery in dry condition.
- 3.4 It is strictly forbidden to place the battery in acidic or alkaline liquid, avoid rain, and keep away from fire source, heat source and high temperature environment
- 3.5 Use the original charger; charging time is not more than 6 hours; charging current is not more than 6A.
- 3.6 If the vehicle is not used for a long time, please put the battery in a cool and dry place, and charge the battery for two hours every two months.
- 3.7 Charging should be carried out in a ventilated environment. It is strictly forbidden to charge in a confined space or in a hot sun.
- 3.8 In case of abnormal indicator light, peculiar smell or overheating of charger shell during charging, stop charging immediately and repair or replace the charge
- 3.9 During the use and storage of the charger, pay attention to avoid the entry of foreign matters, especially the running water or other liquids, so as to avoid the internal short circuit of the charger.
- 3.10 Do not disassemble or replace the parts in the charger by yourself.
- 3.11 Keep the charger and battery inaccessible for children.



RIDING

1. PRE-RIDE INSPECTION

- 1.1 Before riding. Check that the brakes are working properly and are well adjusted.
- 1.2 Check the tires. Any damages cracks, deformations and/or worn out threads means the tire has to be replaced.
- 1.3 Check that the lights work properly and that all reflexes are securely in place
- 1.4 Check the overall condition of the scooter. Any damages to frame, steering parts or other vital parts need to be assessed and repaired by a workshop.

2. RIDING THE VEHICLE

- 2.1 Sit down on the saddle, with one foot on the ground and one foot on the foot peg.
- 2.2 Press the power on button to enter drive mode.
- 2.3 Carefully turn the throttle towards yourself to get moving.
- 2.4 When riding you are to abide by all local laws and regulations regarding vehicles of this type.
- 2.5 As driver you are always accountable for the safety of yourself and people and material in your vicinity.

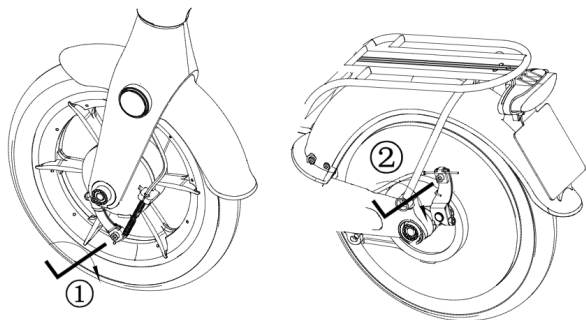
3. BRAKING, STOPPING

- 3.1 If not slippery, it is recommended to use both brakes simultaneously for maximum brake-effect. In slippery conditions, it is not recommended to use the front brake as the wheel can lock and you will lose control.
- 3.2 Be aware of your surroundings when braking and stopping so you can avoid collisions and accidents involving other vehicles and people.
- 3.3 Avoid stopping and parking in the middle of a road or bike-path.

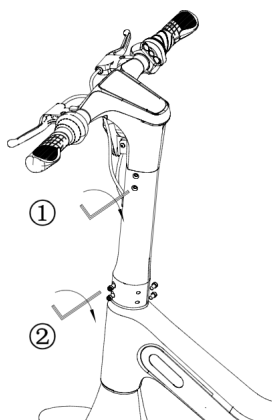
SERVICE & MAINTENANCE

1. BRAKE ADJUSTMENT

- 1.1 When you feel the brake is too loose after driving, you can loosen the fastening screw of drum brake cable with the tools, then adjust it to a proper position, and then lock the screw.
- 1.2 There should be a 5-10mm slack on the brake levers before you feel braking force.



2. SHAKE ADJUSTMENT



- 2.1 When you feel scooter head is shaking, use the tools to tighten the screw at the connection between scooter head and the tube counterclockwise (1)
- 2.2 Also tighten the screw at the connection between the tube and the frame (2)

3. CLEANING

- 3.1 If there are stains on the surface of the scooter body, use a soft cloth dipped in a small amount of water to wipe it
- 3.2 For hard stains you can try to use a small amount of neutral cleaning agent and brush gently repeatedly. then wash off with a damp cloth.
- 3.3 Do not use alcohol, gasoline or other corrosive, volatile chemical solvents. Otherwise, the appearance or internal structure of the scooter body will be seriously damaged.
- 3.4 Never use a high pressure washer to clean your scooter.

4. STORAGE

- 4.1 After riding, please store the scooter in a place without in direct sunlight and rain
- 4.2 Check the screws and the places that need to be tightened, and tighten them regularly
- 4.3 For long time storage, store the scooter indoors under tempered dry conditions protected from outside influences such as sunlight rain, snow, dust, dirt, cold and moisture.
- 4.4 Remove the battery when stored for a longer time and remember to recharge the battery at least once every two months.



WARRANTY POLICY

1. 12 MONTH WARRANTY

- | | |
|----------------------|-----------------------------|
| 1.1 Main body | 1.2 Sub-body + motor |
| 1.1.1 Frame | 1.2.1 Drive hub |
| 1.1.2 Steering head | 1.2.2 Hub motor |
| 1.1.3 Handlebar | 1.2.3 Brake systems |
| 1.1.4 Front fork | |
| 1.1.5 Front tube | |

4. CONDITIONS WHEN WARRANTY IS VOID

- 4.1 Unauthorized maintenance, misuse, collision, negligence, abuse, liquid intake, accident, alteration, incorrect use of non product accessories, or tearing, altering labels and anti-counterfeiting labels, accident.
- 4.2 The validity period of warranty has been exceeded
- 4.3 Damage caused by force majeure, such as third party sabotage, animals, weather conditions and phenomena.
- 4.4 Failure to use, maintain and adjust according to the requirements of the operation manual, resulting in the performance failure of the scooter and its accessories.
- 4.5 Damage caused by human factors (including but not limited to vehicle fluid,puncture, impact, marks and damage caused by normal use of appearance parts, etc.)
- 4.6 Failure and damage caused by abnormal use of the scooter (including but not limited to overload, riding down steps, falling, extreme sports, etc.)
- 4.7 Damage due to unauthorized modifications to the scooter or its accessories or to it's performance
- 4.8 If the scooter is used for commercial use, all warranty is void.
- 4.9 Failure to report damages or defects to reseller within a reasonable time of detecting the damage (usually considered to be within 10 working days)
- 4.10 Failure to remedy the damage or defect before continuing to use the scooter. All consequential damages due to neglect of repair nullifies all warranties and rights to claims.



FURTHER INFORMATION

1. LEGAL RIGHTS

- 1.1 The importer holds all legal rights to this manual and it's content. Copying, duplicating and / or modifying the whole, or parts of this manual is prohibited without written consent from the importer.
- 1.2 This manual does not contain any warranties, guarantees or other commitments. All information in this manual, including specifications, illustrations, and other data, is for reference only. The importer reserves the right to make changes to the operating instructions and product information without prior notice.

2. SAFETY & REQUIREMENT MARKS

- 2.1 The CE mark can be found on the product and in the instructions to indicate that the product meets European safety and electromagnetic requirements. The product has been manufactured in accordance with the instructions for electromagnetism, which means that it is safe to use as long as the instructions in the manual are followed. The product has been manufactured in accordance with EU legislation in order to reduce the use of harmful substances in electrical products.

3. RECYCLING

- 2.1 Used electrical and electronic waste, including batteries and accumulators, must be disposed of in accordance with Directives 2012/19 / EU & 2006/66 / EC for recycling at a waste disposal site or at a retailer.
- 2.2 Dispose of all packaging and vehicle waste in accordance with local laws and regulations.





North European Trust AB
Ji-Te Gatan 2, 26538 Åstorp
SWEDEN

Consumer contact
hello@eloride.com